

# SSH

SSH (Secure Shell) permits an alternate and highly secure form of FTP access to the XigmaNAS server. SSH is enabled via the Services/SSH page.\*

It will permit the use of:

- SFTP file transfer
- SCP File transfer
- SSH access and remote commands execution.

Click the Enable check box, and click Save for a simple Read only default SSH implementation. Modify the SSH settings if required.

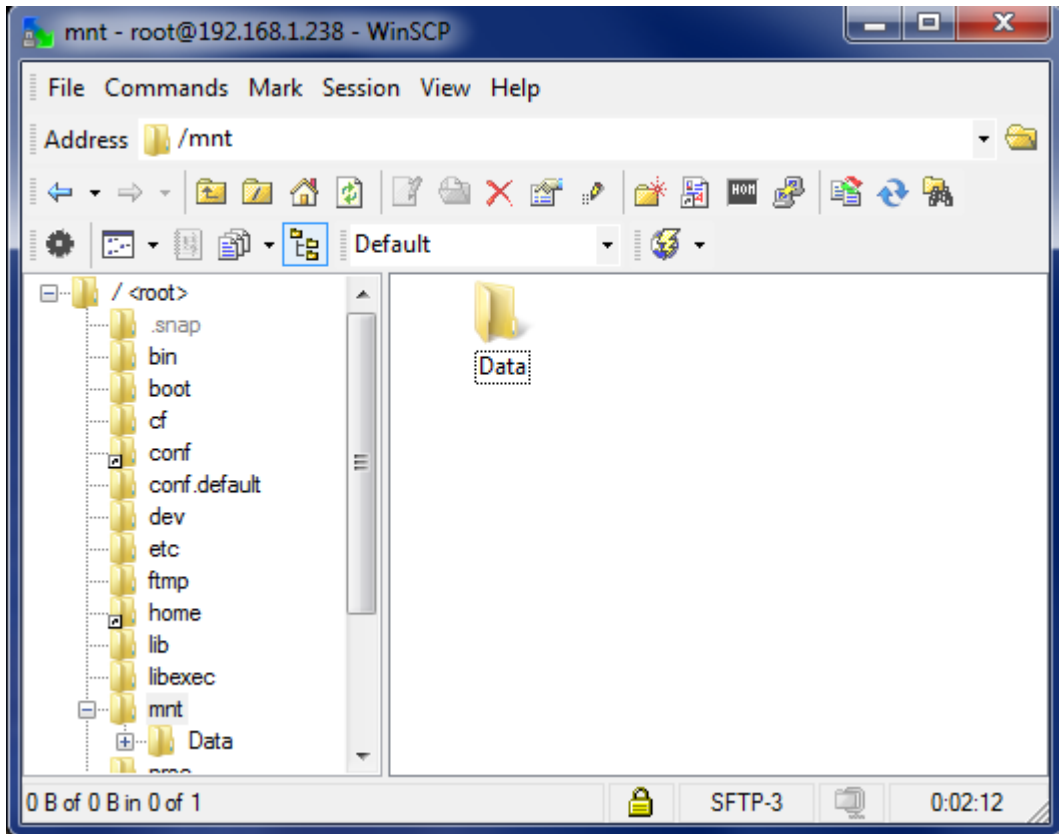
The screenshot shows the XigmaNAS web interface for configuring SSH. The page title is "Services > SSH". The "Secure Shell" section has an "Enable" checkbox checked. The "TCP port" is set to 22. "Enable Challenge-Response Authentication" is checked. "Permit Root Login" is unchecked. "Password Authentication" is checked. "TCP Forwarding" is unchecked. "Compression" is unchecked. The "Private Key" field is empty. The "Subsystem" field is empty. The "Additional Parameters" field is empty. A "Save & Restart" button is at the bottom left.



If you enable the option "Permit root login", the root password is the same as the WebGUI password but the login name is always "root"

## Using WinSCP

Once SSH is configured, login via SSH is enabled, and you can use SCP protocol for file transfer Here is an example with WinSCP:



### Using [Putty](#)

If your user settings are configured with the 'full shell' option, you can connect with a SSH client to a remote terminal on XigmaNAS: here is an example PuTTY interface shown below.



For a console mode to XigmaNAS, the SSH access is preferred over direct screen/keyboard method: The system PATH is more complete with an SSH access

From:  
<https://www.xigmanas.com/wiki/> - XigmaNAS

Permanent link:  
[https://www.xigmanas.com/wiki/doku.php?id=documentation:setup\\_and\\_user\\_guide:services\\_ssh](https://www.xigmanas.com/wiki/doku.php?id=documentation:setup_and_user_guide:services_ssh)

Last update: 2018/10/01 21:04

