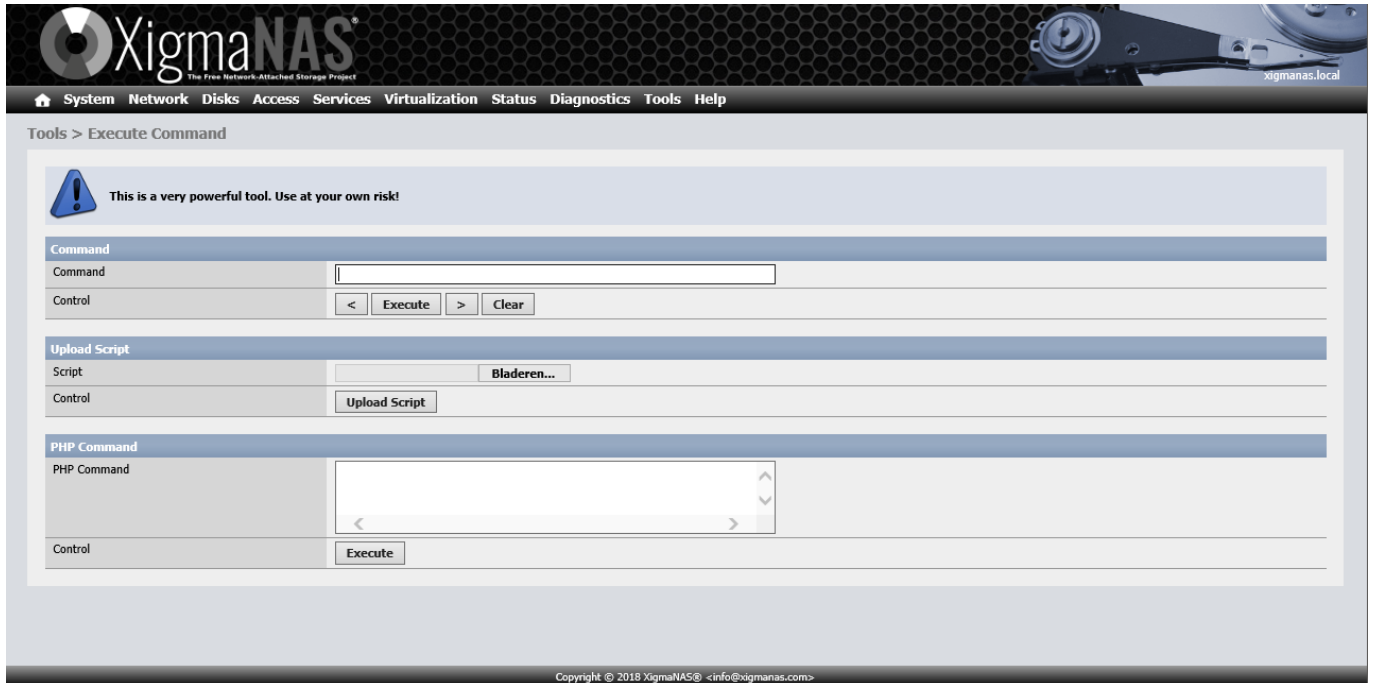


# Tools|Execute command

This is a very powerful system tool, It can be used for some specific tasks and loading scripts.

Users should only use this if they know what they are doing!



From:  
<https://www.xigmanas.com/wiki/> - **XigmaNAS**

Permanent link:  
[https://www.xigmanas.com/wiki/doku.php?id=documentation:setup\\_and\\_user\\_guide:tools\\_command](https://www.xigmanas.com/wiki/doku.php?id=documentation:setup_and_user_guide:tools_command)

Last update: **2018/07/08 16:57**

